



ROTARY

Fúrásí Zrt. ■ Drilling Co.Ltd.

A member of the  Group

Lyb-42

Drilling and Heavy Workover Rig 700 HP
IDECO SBS DIR-806

DEPTH RANGE:

2300 m with 5" DP, 3500 m with 3 1/2" DP

SUBSTRUCTURE:

Height: 4,45 m (14.8 ft)

Height under rotary beams: 3,65 m (11.9 ft)

Set Back: 120 mt

MAST:

IDECO-SBS KM 112-358 AGH, 34 m (112 ft)

Capacity: 160 mt

CROWN BLOCK:

No of sheaves: 6

Grooved: 1 1/8"

Capacity: 162 mt

TRAVELLING BLOCK & HOOK:

IDECO shorty UTB-160-5-30

Capacity: 160 mt

SWIVEL:

IDECO TL-200

Capacity: 181 mt

DRAWWORKS:

IDECO H-1000

Capacity: 700 HP

ROTARY TABLE:

IDECO 205, 20 1/2"

Capacity: 147 mt

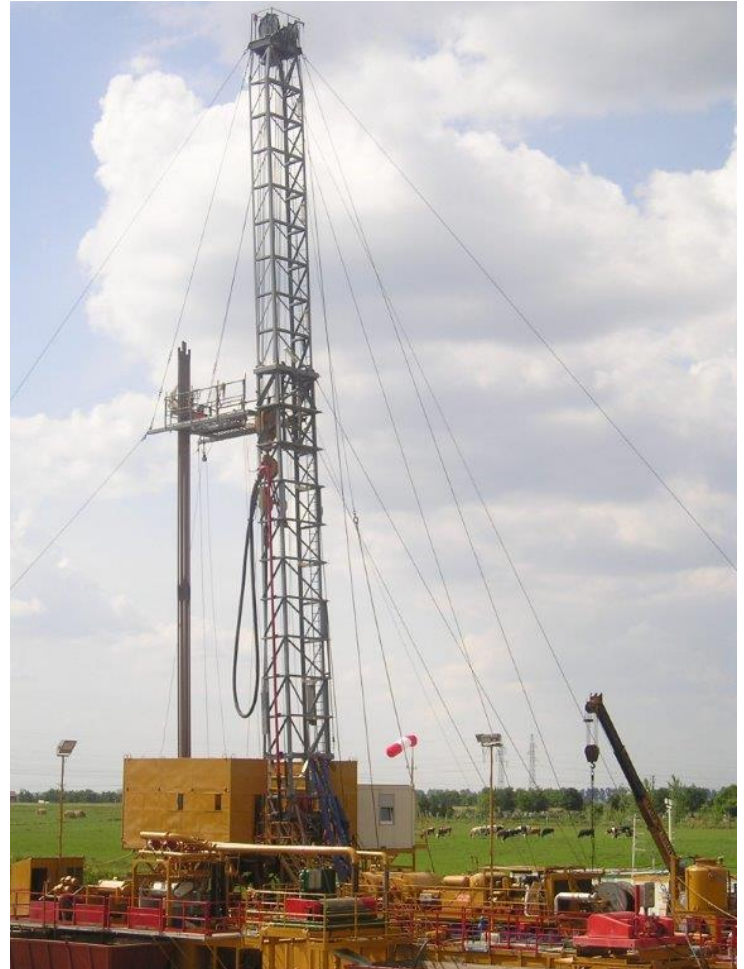
RIG POWER SUPPLY:

Diesel Engines: 2 x CAT 3406 B DITA

Capacity: 425 HP each

MUD PUMPS:

2 x RGF-1000 triplex, Powered by D3512 CAT



MUD TANKS:

Mud Tanks: 4 x 30 m³

Water tanks: 2 x 43 m³

SOLID CONTROL:

2x Mongoose shale shakers,

1x AMC Mud Cleaner 1000 MC,

1x SWACO degasser